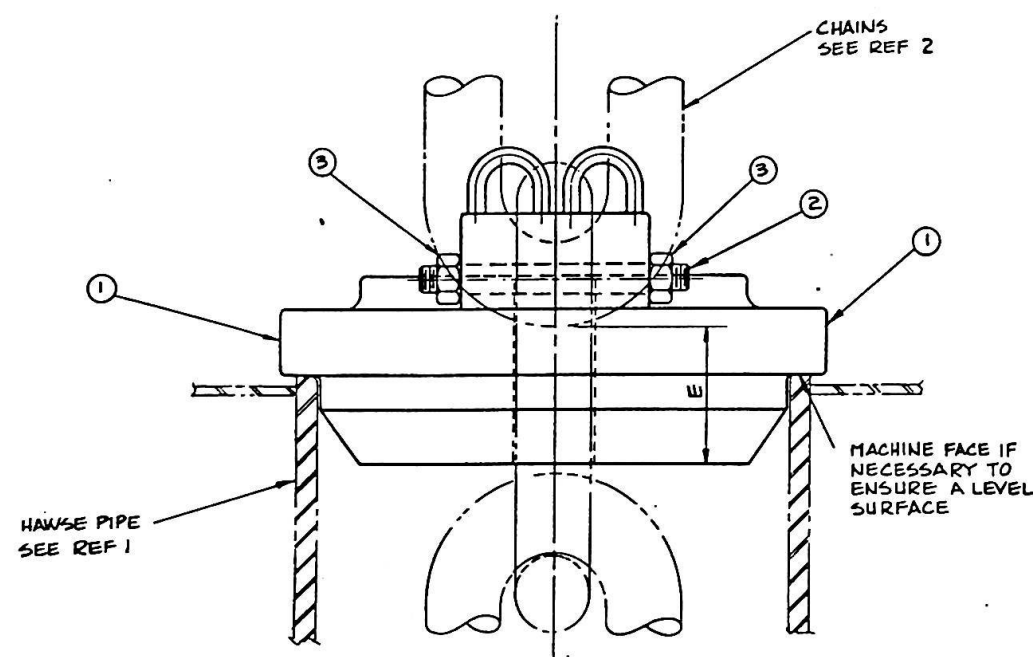
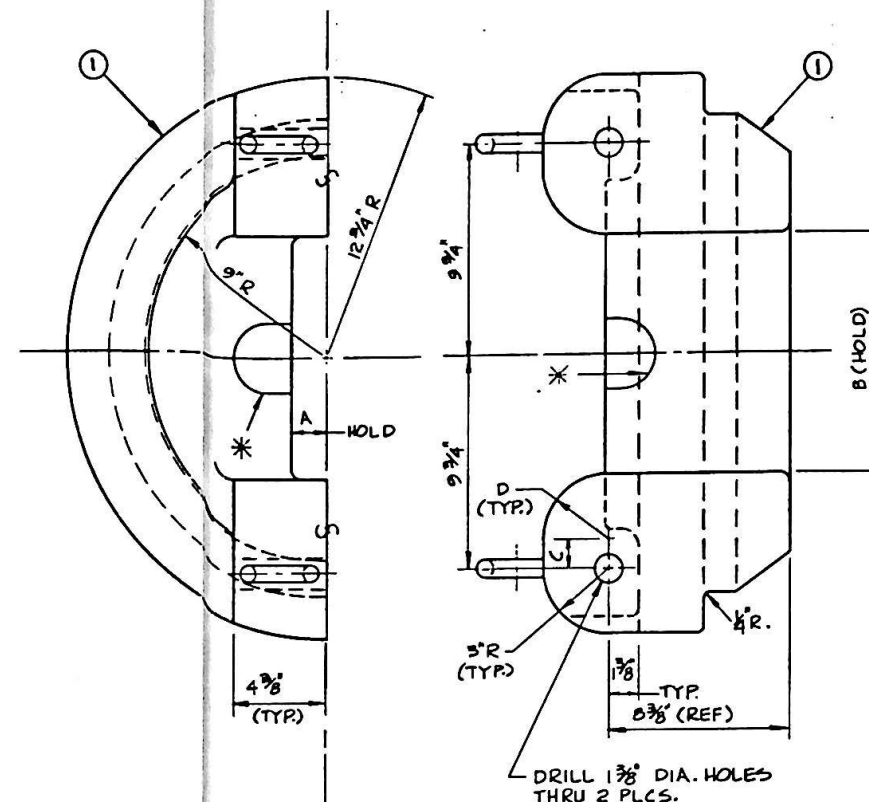


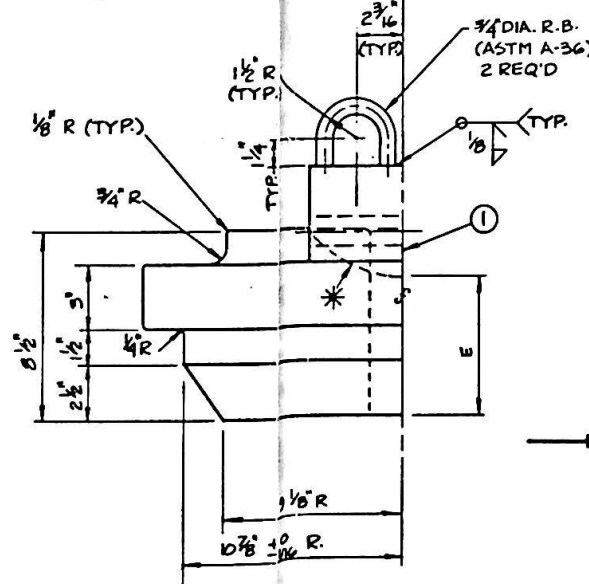
PLAN VIEW CG



ASSEMBLY AG



DETAIL A4



| CHAIN SIZE (INS.) | PROJECT NUMBER | A INS. | B INS. | C INS. | D INS. | E INS. |
|-------------------|----------------|---------|--------|--------|--------|--------|
| 2 1/4 | | 1 1/4 | 8 3/8 | 2 3/16 | | 4 |
| 2 5/16 | | 1 5/16 | 8 5/8 | 2 1/16 | | 4 1/8 |
| 2 3/8 | | | 8 7/8 | 2 3/16 | | 4 1/4 |
| 2 1/2 | | 1 3/8 | 9 | 2 1/4 | | 4 3/8 |
| 2 9/16 | | 1 7/16 | 9 1/2 | 2 | | 4 1/2 |
| 2 5/8 | | 1 1/2 | 9 3/4 | 1 1/8 | | 4 5/8 |
| 2 11/16 | | 1 1/2 | 10 | 1 3/4 | | 4 3/4 |
| 2 3/4 | | 1 9/16 | 10 3/8 | 1 9/16 | | 4 7/8 |
| 2 13/16 | | 1 9/16 | 10 5/8 | 1 7/16 | | 5 |
| 2 7/8 | | 1 5/8 | 10 7/8 | 1 5/16 | | 5 1/8 |
| 2 15/16 | | 1 5/8 | 11 1/8 | 1 3/16 | | 5 1/4 |
| 3 | | 1 11/16 | 11 1/4 | 1 1/8 | | 5 3/8 |
| 3 1/16 | | 1 11/16 | 11 1/2 | 1 | | 5 1/2 |
| 3 1/8 | | 1 3/4 | 12 | 3/4 | | 5 1/4 |
| 3 3/16 | 1191 | 1 13/16 | 12 1/4 | 5/8 | | 5 1/8 |
| 3 1/4 | | 1 7/8 | 12 3/8 | 9/16 | | 5 |
| 3 5/16 | | 2 | 13 3/4 | 0 | 2 1/8 | 4 3/4 |
| 3 3/8 | | 2 1/16 | 14 1/4 | 0 | 2 5/8 | 4 3/4 |
| 3 7/16 | | 2 1/8 | 14 3/4 | 0 | 2 3/8 | 4 3/4 |
| 4 | | 2 3/16 | 15 1/8 | 0 | 2 3/16 | 4 3/4 |
| 4 1/8 | | 2 1/4 | 15 3/4 | 0 | 1 1/8 | 4 3/4 |
| 4 1/4 | | | | | | |

| REFERENCES | | |
|------------|-------------------------|-------------|
| NO. | TITLE | DRAWING NO. |
| 1 | 11 METER BUOY DECK PLAN | 1191-001 |
| 2 | MOORING PLAN | 1191-050 |
| 3 | | |
| 4 | | |
| 5 | | |
| 6 | | |
| REVISIONS | | |
| NO. | DESCRIPTION | DATE |
| A | ISSUED FOR BID | 01/24/86 |
| B | ISSUED FOR CONSTRUCTION | 02/10/86 |
| C | AS BUILT | 02/10/86 |

| ITEM | DESCRIPTION | SPEC | QTY | SHT |
|------|----------------------------|---------------|-----|-----|
| 3 | 1 1/4" BUN FLEX-LOC NUT | A-194GR 8M | 4 | |
| 2 | 1 1/4" BUN STUD 12 1/2" LG | A-193GR 8M | 2 | |
| 1 | CHAIN STOPPER DETAILS | A-27 GR 12-40 | 2 | |

Information herein presented is confidential, proprietary information of IMODCO Marine Engineering Inc., a subsidiary of AMCA International Corporation. Any person accepting this information is required to accept terms of confidentiality, to agree to make no disclosure, use, reproduction or copy thereof, except as authorized by AMCA, and to return same to the originator.

CLIENT: C P C PROJECT: SRI LANKA TITLE: CHAIN STOPPER ASSEMBLY & DETAILS

DO NOT SCALE DRAWING

SCALE: 1/4" = 1" DWG. NO.: 1191-851

AS BUILT